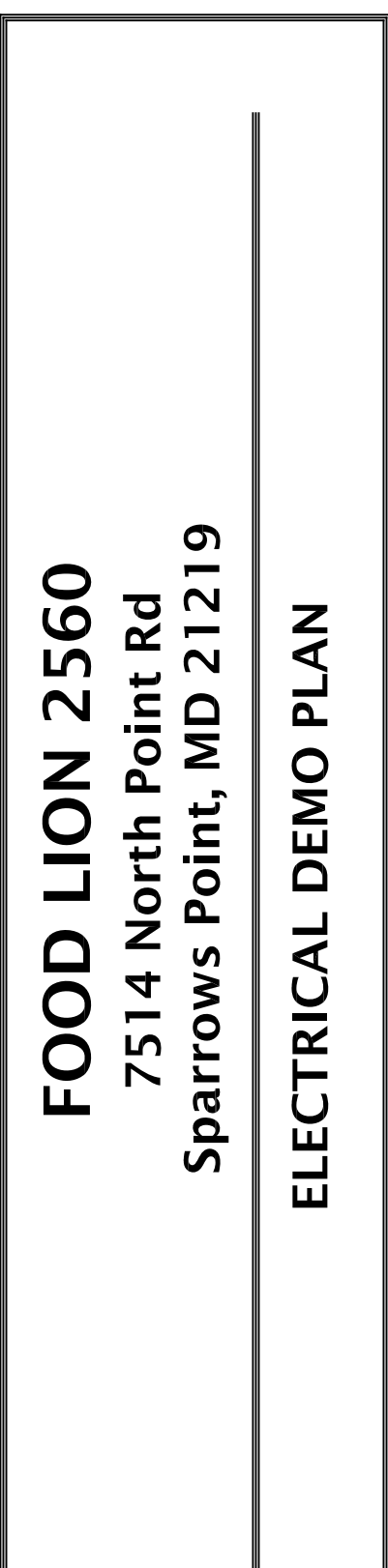
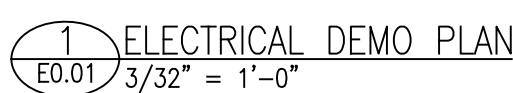




**Riddick Fiedler Stern**<sup>pc</sup>  
Architecture ■ Planning ■ Interior Design  
261 West Bute Street ■ Norfolk, VA 23510 ■ (757) 627-2791



**STURGILL**  
**ENGINEERING**  
**PA** C-3617  
ONE SOUTH MAIN ST.  
LEXINGTON, NC 27292  
(336) 238-1249 PH.  
(336) 236-6393 FAX



1. ALL ACCESSIBLE ITEMS OF ELECTRICAL EQUIPMENT CONDUITS, WIRING, LIGHTS, RECEPTACLES, ETC. AFFECTED BY THE RENOVATION WORK AND NOT REQUIRED IN THE COMPLETED WORK SHALL BE CAREFULLY REMOVED. DAMAGED WALLS, FLOORS, CEILINGS, ETC. SHALL BE PATCHED AND FINISHED TO MATCH THE EXISTING ADJACENT SURFACES. REMOVED ITEMS SHALL BE PROPERLY DISPOSED OF OFF SITE AND NOT RE-USED EXCEPT AS NOTED. TURN OVER ALL EXISTING EQUIPMENT DESIGNED BY BUILDING OWNER. ITEMS TO BE RE-USED SHALL BE CAREFULLY REMOVED AND STORED IN A PROTECTED AREA.
2. REMOVE EXISTING CIRCUITS IN PANELS NOT REQUIRED FOR COMPLETED WORK. UTILIZE EXISTING BREAKERS FOR NEW WORK SHOW. PROVIDE NEW BREAKERS AS REQUIRED TO SERVE NEW CIRCUITS. LABEL ALL BREAKERS. LABEL ALL BREAKERS NOT USED AS SPARE.
3. RECONNECT CIRCUITS AS REQUIRED TO MAINTAIN CONTINUITY TO EXISTING DEVICES AND EQUIPMENT NOTED TO REMAIN AS WELL AS ADJACENT AREAS WHICH ARE NOT IN CONTRACT.
4. REMOVE UNUSED CONDUIT AND WIRE BACK TO SOURCE.
5. ALL WIRING SHALL BE DONE IN STRICT ACCORDANCE WITH N.E.C. STANDARDS AND WITH FOOD LION STANDARDS. ALL WORK SHALL BE OF FIRST QUALITY. NO HAZARDOUS WORK WILL BE ACCEPTED. ELECTRICAL CONTRACTOR IS TO MAKE SURE THAT NO MC OR FLEX CABLES ARE USED UNLESS OTHERWISE NOTED. MC OR FLEX CABLES CAN ONLY BE USED IN SHORT RUNS FOR LIGHTING FEEDS. EMT MUST BE USED TO CONNECT PANEL TO JUNCTION BOX AND HAVE COMPRESSION TYPE FITTINGS. SEE SPECIFICATIONS FOR STANDARD PRACTICES.
6. DO NOT DISRUPT THE PULL STATIONS, SAFE, OR ANY COMPONENT OF THE FIRE OR SECURITY SYSTEM WITHOUT FIRST CONTACTING FOOD LION PHYSICAL SECURITY (AARON ASHLEY) AT (704) 633-8250 ext. 3128.
7. The electrical contractor shall review the HAZARDOUS MATERIAL REPORT, IF APPLICABLE, AND COORDINATE ALL HAZARDOUS MATERIAL REMOVAL WITH THE FOOD LION CONSTRUCTION SUPERVISOR.
8. THE ELECTRICAL CONTRACTOR SHALL PHOTOGRAPH OR VIDEOTAPE EXISTING CONDITIONS IN AND AROUND THE STORE PRIOR TO BEGINNING CONSTRUCTION. PARTICULAR ATTENTION SHOULD BE DIRECTED TO THE CEILING, ALL LIGHTING AND PANELS.
9. THE ELECTRICAL CONTRACTOR SHALL COORDINATE REMOVAL/RELOCATION OF LOTTERY EQUIPMENT WITH THE GENERAL CONTRACTOR AND THE FOOD LION CONSTRUCTION SUPERVISOR.
10. ALL WORK IN REST ROOMS TO BE SCHEDULED TO ALLOW FOR AT LEAST ONE TO REMAIN OPEN AT ALL TIMES. COORDINATE WITH FOOD LION CONSTRUCTION SUPERVISOR. PROPER SIGNAGE MUST BE INSTALLED WITH UNLXSE RESTROOMS. USE SLIDE LOCK. PROVIDED BY FOOD LION.

1. REFRIGERATED CASE TO BE REMOVED. COORDINATE REQUIREMENTS WITH THE REFRIGERATION CONTRACTOR.
2. EQUIPMENT TO BE REMOVED. ELECTRICAL CONTRACTOR SHALL DISCONNECT AS REQUIRED. REMOVE DEVICES, WIRE, CONDUITS, ETC. AND EXTEND CIRCUITS AS SPARE FOR NON-REUSED CIRCUITS.
3. REFRIGERATED CASE TO BE RELOCATED. ELECTRICAL CONTRACTOR SHALL DISCONNECT AS REQUIRED, REMOVE DEVICES, WIRE, CONDUITS, ETC. AND EXTEND CIRCUITRY AND RECONNECT AS REQUIRED TO NEW LOCATION.
4. EQUIPMENT TO BE RELOCATED. ELECTRICAL CONTRACTOR SHALL DISCONNECT AS REQUIRED, REMOVE DEVICES, WIRE, CONDUITS, ETC. AND EXTEND CIRCUITRY AND RECONNECT AS REQUIRED TO NEW LOCATION.
5. LIGHTING FIXTURE TO BE REMOVED. RELOCATED. SEE SHEET E1.01. ANY LIGHT FIXTURES TO BE REMOVED ARE TO BE DEMOLISHED. RELOCATE IN SUGGESTED LOCATION THAT RENDERS THEIR REUSABLE. C. SHALL STORE FIXTURES IN A SECURED TRAILER.
6. TRELLIS AND ASSOCIATED TRUCK LIGHTING TO BE REMOVED COMPLETE. REMOVE WIRE BACK TO SOURCE AND LABEL. NON-REUSED BREAKERS AS "SPARE".
7. ELECTRICAL CONTRACTOR SHALL DISCONNECT, REMOVE AND ASSOCIATED EQUIPMENT. ELECTRICAL CONTRACTOR SHALL PULL ALL POINT OF SALE EQUIPMENT, FOOD LION ELECTRICAL CONTRACTOR (MID-CAROLINA) SHALL REMOVE AND DISPOSE OF CHECK STANDS. CIRCUITRY TO REMAIN FOR REUSE.
8. MILLWORK TO BE REMOVED. ELECTRICAL CONTRACTOR SHALL DISCONNECT AND REMOVE ANY EXISTING RACEWAYS, ETC. MONITOR AND RELOCATE AND REPAIR AS REQUIRED FOR RECONSTRUCTION. FIELD VERIFY EXISTING CONDITIONS AND EXTENT OF WORK. COORDINATE OVERNIGHT WORK WITH FOOD LION CONSTRUCTION SUPERVISOR 2 WEEKS PRIOR.
9. STORE FRONT SIGN TO BE REPLACED. DISCONNECT AS REQUIRED. CIRCUITRY TO REMAIN FOR RECONSTRUCTION. NEW LED SIGN REQUIRES ONE JUNCTION BOX. TERMINATE THE REST FOR FUTURE USE.
10. EVAP COIL TO BE REPLACED. DISCONNECT AS REQUIRED. CIRCUITS TO REMAIN FOR REUSE. COORDINATE WITH THE REFRIGERATION CONTRACTOR.
11. ELECTRICAL SECTION TO BE DEMOLISHED. RELOCATE ALL DEVICES, CONDUIT, WIRE, ETC. IN AFFECTED AREAS. CIRCUITS TO BE REROUTED TO NEW EQUIPMENT LOCATIONS. FIELD VERIFY EXTENT OF WORK.
12. ELECTRICAL CONTRACTOR TO COORDINATE WITH FOOD LION CONSTRUCTION SUPERVISOR AT TIME OF WALK THROUGH IF EXISTING SALES AREA FACING EMERGENCY AND EXIT SIGNS TO BE REPLACED WITH NEW EXISTING FIXTURES.
13. EXISTING ROOFTOP MECHANICAL EQUIPMENT TO BE REMOVED. DISCONNECT AS REQUIRED. SEE SHEET E1.02 FOR CIRCUITRY TO REMAIN FOR REUSE. REMOVE WIRE BACK TO SOURCE AND LABEL. NON-REUSED BREAKERS AS "SPARE". COORDINATE WITH THE MECHANICAL CONTRACTOR.
14. REFRIGERATED CASE TO BE REMOVED AND REPLACE WITH NEW SLIM PROFILE HAND DRYER. EXTEND CIRCUITRY AS REQUIRED. COORDINATE REQUIREMENTS WITH THE NEW HAND DRYER.
15. PROPANE EXCHANGE LOCATION, ELECTRICAL CONTRACTOR SHALL FIELD VERIFY THAT ALL ELECTRICAL CONNECTIONS ARE CAPPED OFF WITHIN 5' OF THE FINAL LOCATION OF THE RELOCATED PROPANE EXCHANGE. ELECTRICAL CONTRACTOR SHALL DISCONNECT ALL WIRING AND CAPP OFF CONDUITS.
16. CONDUITS ON THIS WALL TO BE RECESSED IN WALL OR REMOVED IF NOT USE.
17. REMOVE EXISTING UPLIGHT LIGHTING FIXTURES. PROVIDE CIRCUITRY PROVISIONS NECESSARY TO MAINTAIN DOWNSTREAM LOCATIONS.
18. RECEPTION DESKS, RECEPTION STATIONS, DATA, AND JUNCTION BOXES BELOW 48" AFF TO BE RELOCATED TO 48" AFF BEHIND NEW CABINET TO BE INSTALLED IN WORK ROOM.
19. REMOVE CEILING-MOUNTED RECEPTABLES U.O.N.
20. LITE MISCER PANEL TO BE REMOVED, PANEL IA TO BE CONNECTED DIRECTLY TO MOP-2. (NO HOT WORK ALLOWED) COORDINATE WITH FOOD LION CONSTRUCTION SUPERVISOR EXACT AMOUNT OF WORK REQUIRED.
21. CANOPY SECTION TO BE DEMOLISHED. REMOVE ALL DEVICES AND RE-ROUTE ALL AFFECTED CIRCUITRY AS REQUIRED TO MAINTAIN DOWNSTREAM LOADS. FIELD VERIFY EXTENT OF WORK.
22. EQUIPMENT TO BE REMOVED & RECEPTABLE REUSED AS CONVENIENCE OUTLET; COORDINATE WITH SHEET E1.02 & E1.01.

LEGEND

===== ITEMS TO BE REMOVED AS NOTED ON PLAN

----- ITEMS TO BE RELOCATED